

Vermilion River Greenway Trail Map

Streator
ILLINOIS



Welcome to the City of Streator's Vermilion River Greenway Trail

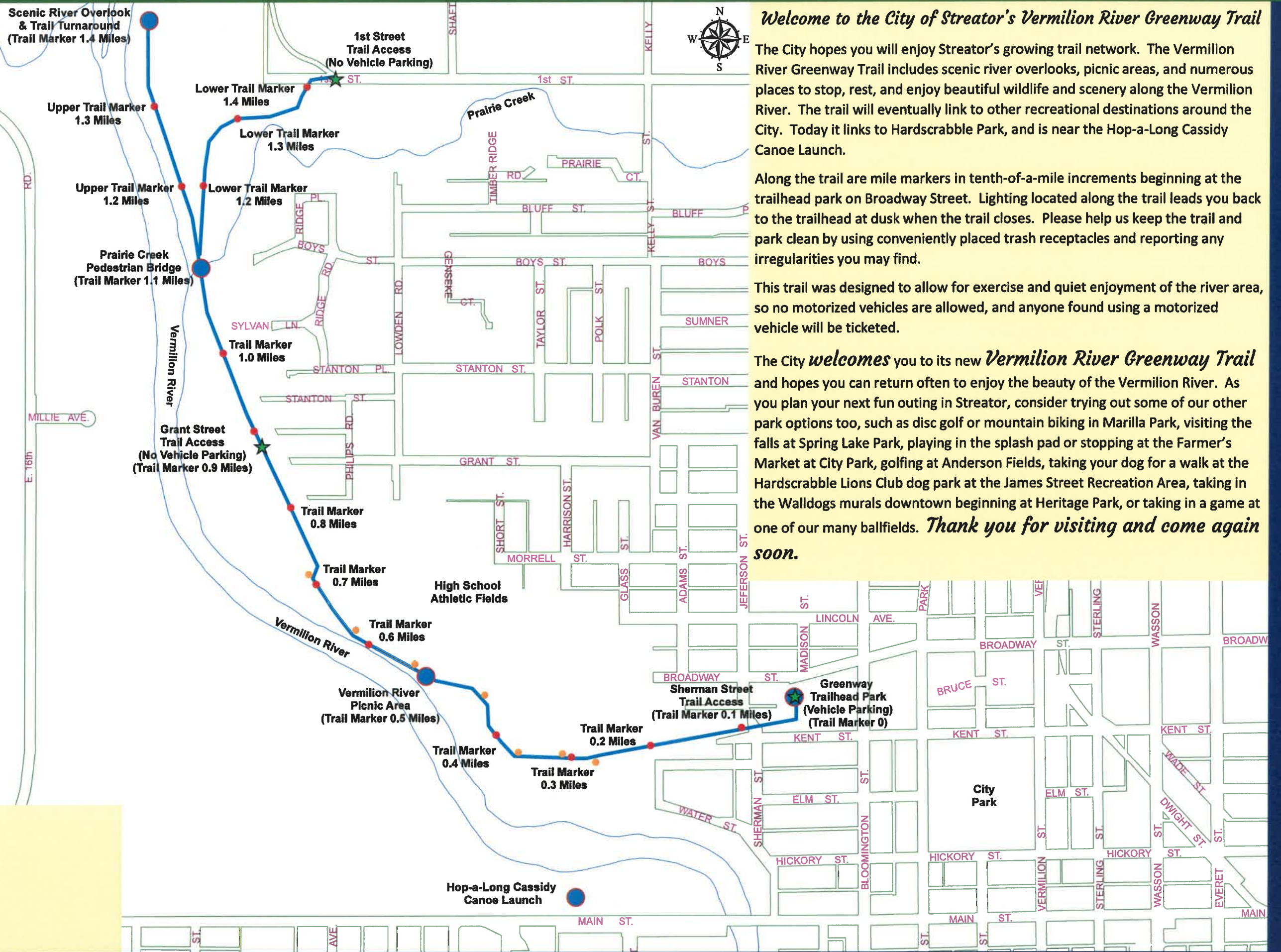
The City hopes you will enjoy Streator's growing trail network. The Vermilion River Greenway Trail includes scenic river overlooks, picnic areas, and numerous places to stop, rest, and enjoy beautiful wildlife and scenery along the Vermilion River. The trail will eventually link to other recreational destinations around the City. Today it links to Hardscrabble Park, and is near the Hop-a-Long Cassidy Canoe Launch.

Along the trail are mile markers in tenth-of-a-mile increments beginning at the trailhead park on Broadway Street. Lighting located along the trail leads you back to the trailhead at dusk when the trail closes. Please help us keep the trail and park clean by using conveniently placed trash receptacles and reporting any irregularities you may find.

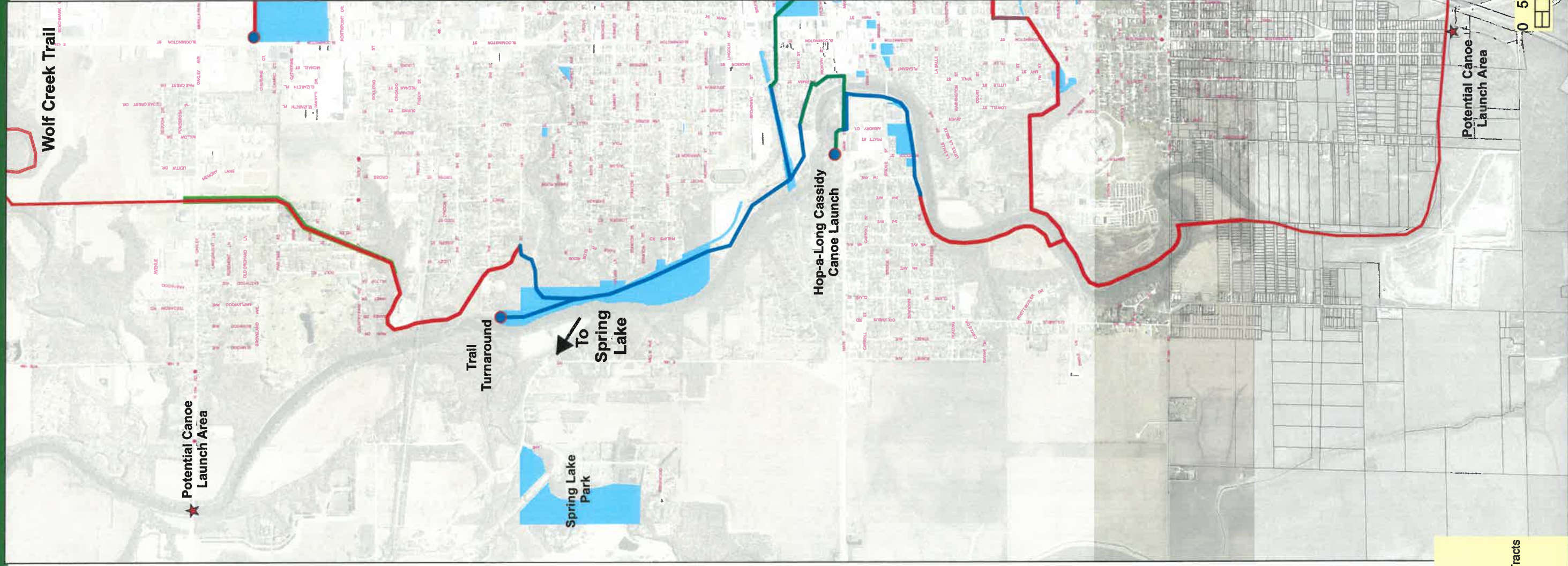
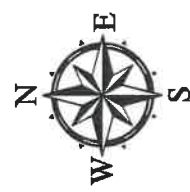
This trail was designed to allow for exercise and quiet enjoyment of the river area, so no motorized vehicles are allowed, and anyone found using a motorized vehicle will be ticketed.

The City *welcomes* you to its new *Vermilion River Greenway Trail* and hopes you can return often to enjoy the beauty of the Vermilion River. As you plan your next fun outing in Streator, consider trying out some of our other park options too, such as disc golf or mountain biking in Marilla Park, visiting the falls at Spring Lake Park, playing in the splash pad or stopping at the Farmer's Market at City Park, golfing at Anderson Fields, taking your dog for a walk at the Hardscrabble Lions Club dog park at the James Street Recreation Area, taking in the Walldogs murals downtown beginning at Heritage Park, or taking in a game at one of our many ballfields. *Thank you for visiting and come again soon.*

- Legend**
- Existing Trail
 - Trail Destination
 - Trail Mile Marker
 - Trail Light
 - Trail Map Location



Vermilion River Greenway Trail Corridor



- Legend**
- Existing Trail
 - Proposed Trail (To be Constructed)
 - Proposed Trail (Existing Sidewalk)
 - Easement/Abandoned Rail Property/IR Tracts
 - NS
 - City Owned Property

