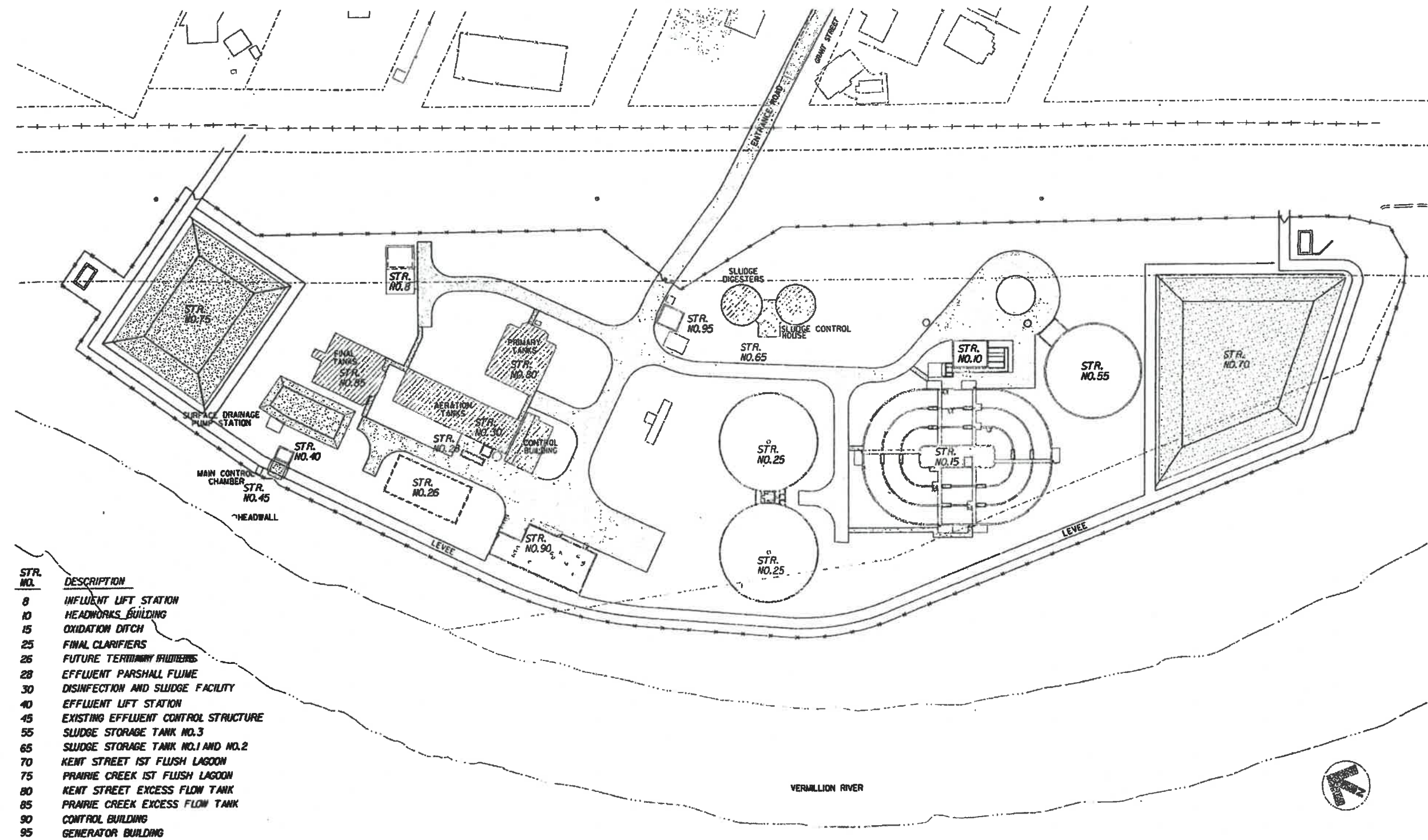


SECTION	COUNTY	TOTAL SHEETS	SHEET NO
08-WWTP EQUIP	LABALLE	70	16

Item #2



STR. NO.	DESCRIPTION
8	INFLUENT LIFT STATION
10	HEADWORKS BUILDING
15	OXIDATION DITCH
25	FINAL CLARIFIERS
26	FUTURE TERTIARY FILTERS
28	EFFLUENT PARSHALL FLUME
30	DISINFECTION AND SLUDGE FACILITY
40	EFFLUENT LIFT STATION
45	EXISTING EFFLUENT CONTROL STRUCTURE
55	SLUDGE STORAGE TANK NO.3
65	SLUDGE STORAGE TANK NO.1 AND NO.2
70	KENT STREET 1ST FLUSH LAAGOON
75	PRAIRIE CREEK 1ST FLUSH LAAGOON
80	KENT STREET EXCESS FLOW TANK
85	PRAIRIE CREEK EXCESS FLOW TANK
90	CONTROL BUILDING
95	GENERATOR BUILDING



FINAL

Drawn By: JL	Date: 07/01/2008	Revisions	
Checked By: JP	Job No. 08-WWTP EQUIP	Date	Change

Scale: 1" = 50'

City of Streator

204 S. Bloomington St.
Streator, IL 61364



Site Plan

Vermilion Greenway Trail and Park Project



204 S. Bloomington St.
Streator, IL 61364

City of Streator

Scale: 1"=250'

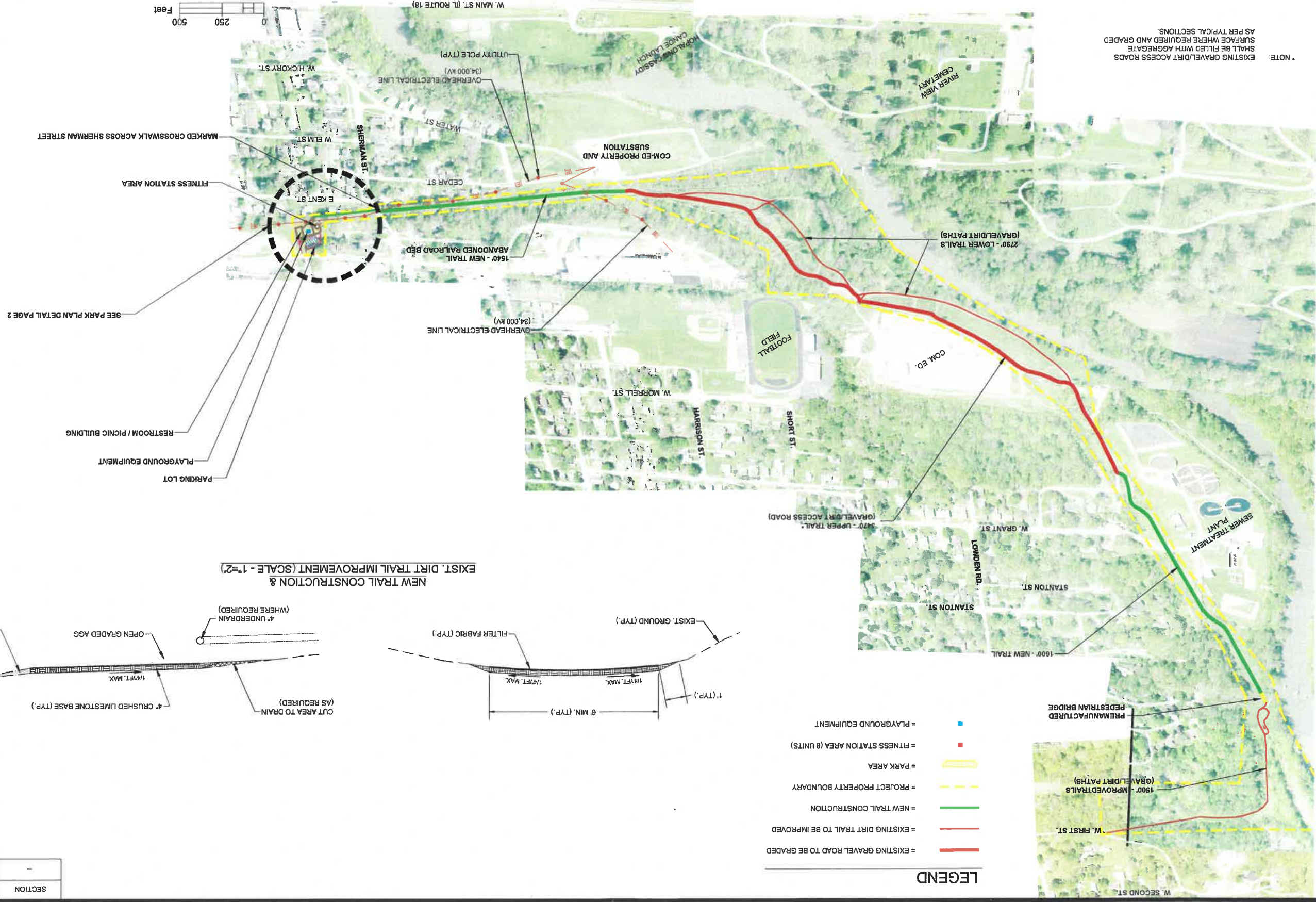
Revisions		Date	Change
3/15/18	Public Comment	3/15/18	
2/1/18	Park Location	2/1/18	
6/10/2014		6/10/2014	

Checked By: JP

Drawn By: JL

NOTE: EXISTING GRAVEL/DIRT ACCESS ROADS SHALL BE FILLED WITH AGGREGATE SURFACE WHERE REQUIRED AND GRADED AS PER TYPICAL SECTIONS.

Item #4



SECTION	COUNTY	LASALLE	TOTAL SHEETS	SHEET NO.
-	-	-	1	1